

Stepping Forward on Otley Chevin

Summary of the work
completed by Leeds Beckett
Landscape Architecture
Students 2024/5

Lead by Emma Oldroyd CMLI | Senior Lecturer in
Landscape Architecture

E.L.Oldroyd@leedsbeckett.ac.uk

For Otley Town Council 16/06/25



Landscape Architecture at Leeds Beckett University.

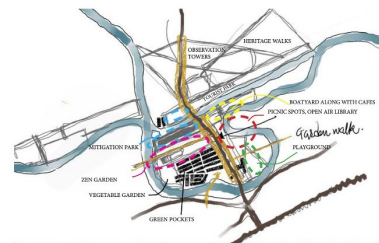


Student work Landscape Architecture at Leeds Beckett University



1 Reconnecting Bradford Beck

The vision was to reconnect communities through improved nature and celebrated heritage with Bradford Beck at the heart. The design looks at restoring the beck to its naturalistic state creating wildlife wetland and community spaces to spend time in nature.



The New Foster Square area presents a strategic opportunity to create a new mixed-use development and green gateway into the city centre. The site is positioned to be a hub for innovation and technology, offering a mix of residential, commercial, and leisure spaces. The design focuses on creating a vibrant, walkable community with a mix of green infrastructure and sensory planting to promote the health and wellbeing of pedestrians in the city centre.

Landscape Futures: Placemaking "Biodiver-City"

Project Summary: A final project drawing upon all design and research skills developed on the course so far, a comprehensive landscape architecture planning strategy, through site survey and analysis through all stages of design. From understanding and site strategies, through to masterplanning, site design and technical resolution.

A tapestry of strategic blue & green corridors for increased biodiversity, and the direct, sensory exposure for people's health and wellbeing.



Site location within Bradford City Centre, covering the Bradford Mill park and the Post Office site. The urban green in the analysis map represents the site location.



A background image of a topographic map with contour lines and some building outlines. The text is overlaid on this map.

Leeds Beckett Landscape Architecture students study 'Resilient Rural Landscapes' as part of their course. On Otley Chevin, students

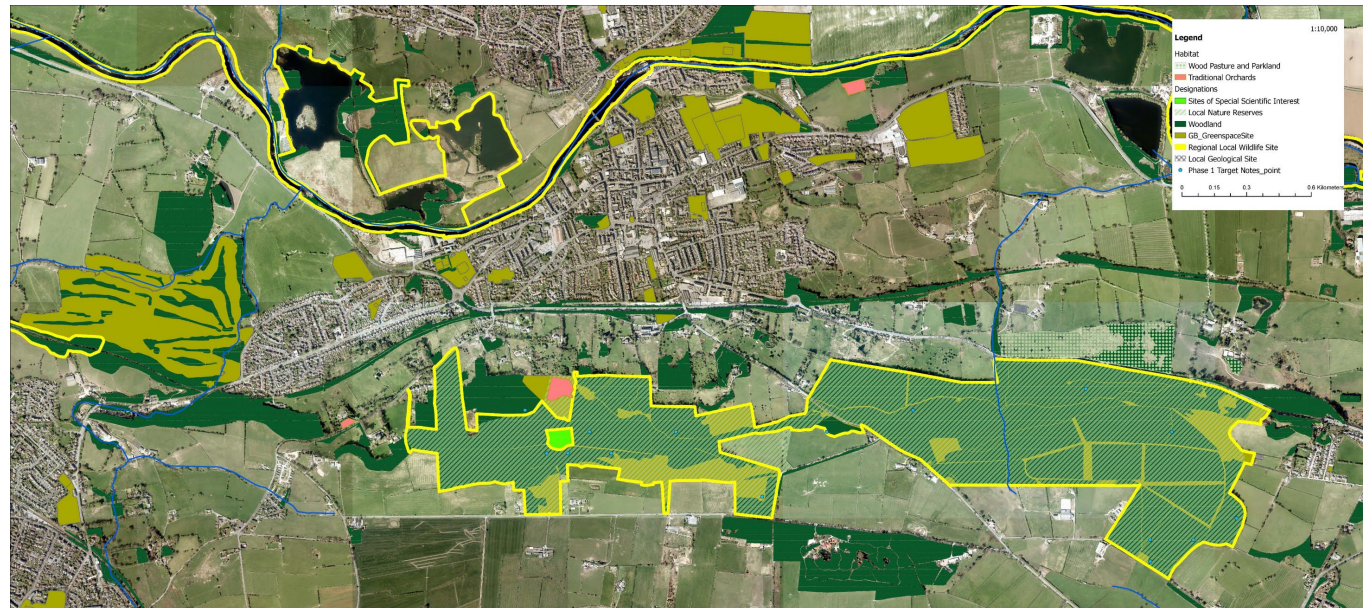
- 1. Researched, surveyed and mapped findings to record and analyse The Chevin **at present.****
- 2. Developed and shared ideas for **the future.****

Work done on The Chevin at Present

1. We talked with FoCF about what's special and, also concerning about The Chevin.



2. We mapped relevant designations and valuable / sensitive habitats and assets using GIS and AutoCAD.

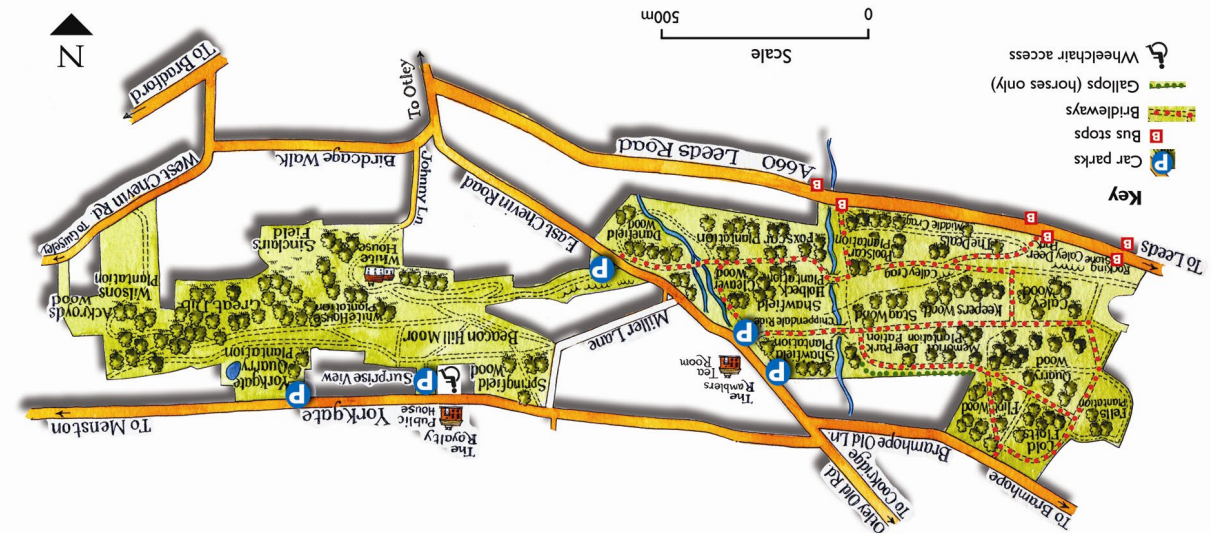
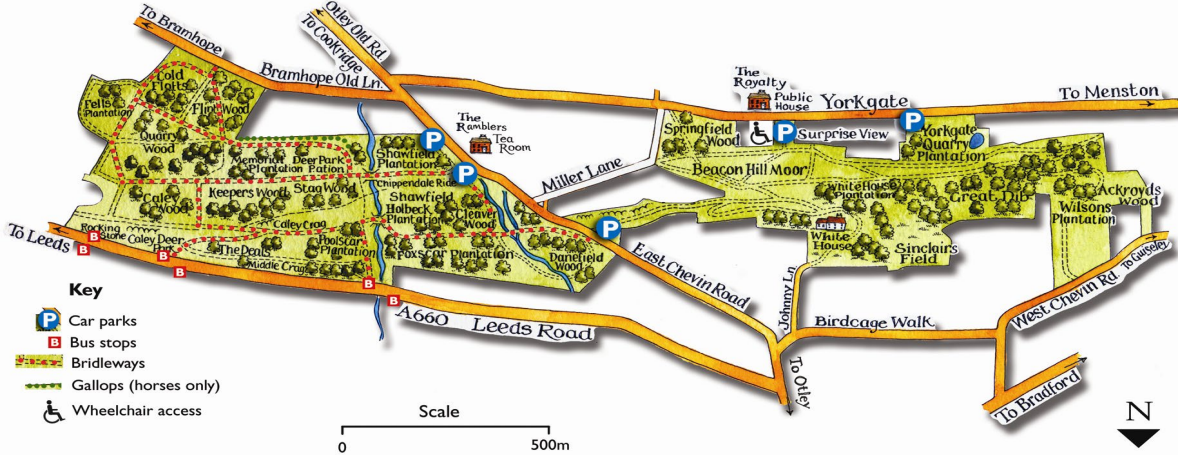


Work done on The Chevin at Present

3. We have been looking at pathways across the Chevin.

There are beautiful maps of The Chevin available

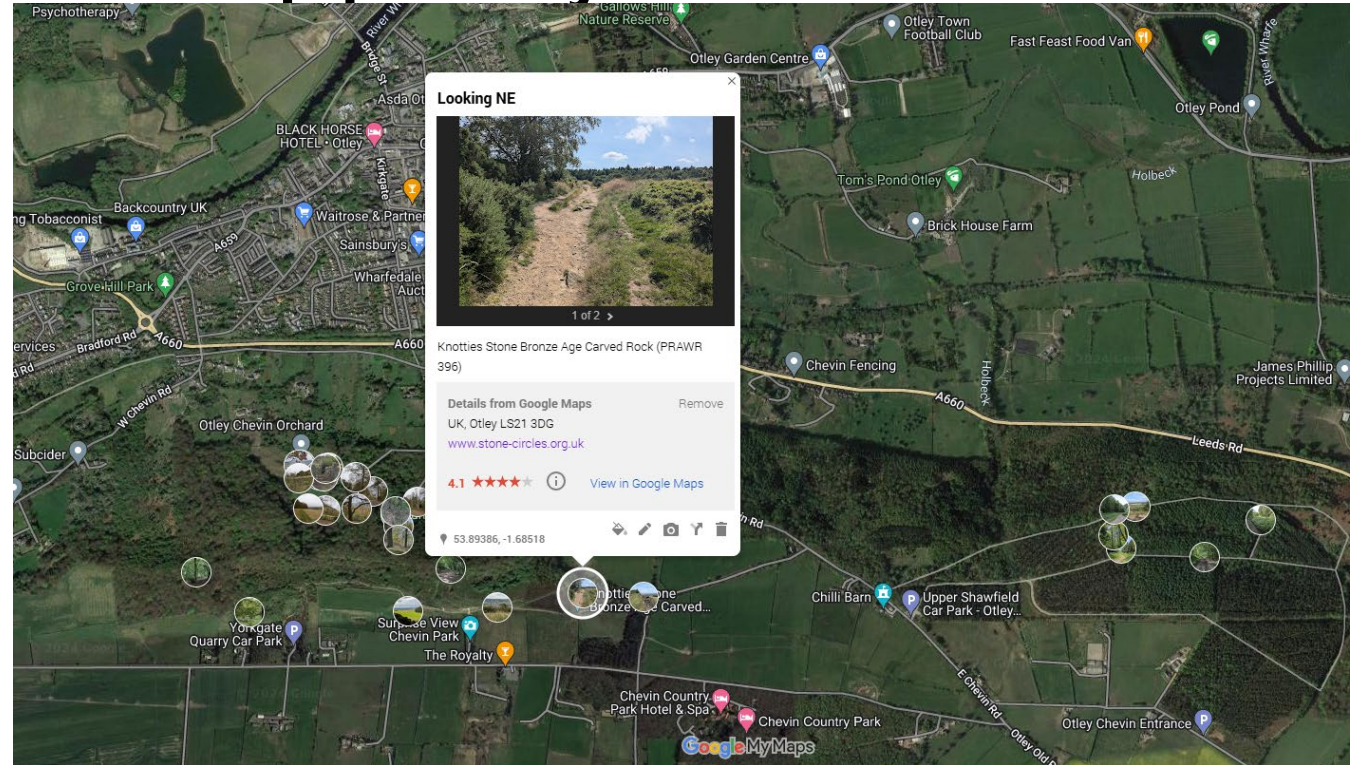
Chevin Forest Park leaflet



Although they don't always match our mental map! And don't show all the paths

Work done on The Chevin at Present

So we got together and started to re-map pathways



This work needs to be finalised but could be a great starting point in making sure paths go where people want to go – and avoid sensitive habitats.

The Chevin at Present

4. We researched and analysed natural, cultural & experiential layers of the Chevin – which fed into a values and ideas questionnaire (presently live) to find out about local opinion.

NATURAL FACTORS

What we mean by 'natural' is any parts of the Chevin that would exist **without human interventions**.



CULTURAL FACTORS

What we mean by 'cultural' is any parts of the Chevin that only exist **because and for people**.



EXPERIENTIAL FACTORS

What we mean by 'experiential' is anything that we **see, sense or feel**.



Natural Factors

Results of the student's analysis

What we mean by 'natural' is any parts of the Chevin that would exist without the intervention of people



NATURAL FACTORS



VALUED ASSETS AND STRENGTHS

- The mosaic of **habitats**
- The **geological features** of The Chevin.
- The **native trees**.
- **Ancient and aging trees** present.
- The **grasslands and heath**.
- The **wildlife ponds**.
- Small **streams**.
- The **wildlife** that the Chevin supports.

ISSUES AND CHALLENGES

- **Invasive species**.
- Controlling **self-seeding trees** on valuable assets.
- **Maintaining** the ponds.
- **Work** involved in introducing additional nature-based solutions.
- **Disturbance of wildlife and habitats** by people – and their dogs.
- **Erosion**.
- Not enough **wildlife corridors** linking habitats together.

Cultural Factors

Results of the student's analysis

*What we mean by 'cultural' is any parts of the Chevin that only exist **because and for** people.*



CULTURAL ASPECTS & FACILITIES



VALUED ASSETS AND STRENGTHS

- **Designated and protected** site.
- The possibility to explore **lots of routes**.
- **Long distance routes** that connect further afield.
- The presence of **historical features and land uses**.
- **The Orchard**.
- The **plantation forest** with its rows of coniferous trees.
- The links to **Thomas Chippendale** in the plantation.
- **The White House**, as a place to gravitate to, hold events and use as a base for LCC teams and volunteers.
- **Volunteer groups** and their commitment to The Chevin.
- **Organised events** (for example wildlife, cultural, walking, running).
- Several **car parks** available.

ISSUES AND CHALLENGES

- **Connections to Otley town** could be improved.
- **Pathways** aren't always easy to work out and follow (by foot or using a map).
- **Few paths are accessible** for buggies and wheelchairs / mobility scooters.
- **Busy roads** around The Chevin are dangerous for pedestrians – especially near crossings.
- **Historic assets and names** are not always celebrated.
- **The White House** may not support all needs (refer to White House survey).
- **A lack of funding and investment**
- **A lack of people power.**
- **Car park charges? Lack of toilets. Other facilities?**

Experiential Factors

Results of the student's analysis

*What we mean by 'experiential' is anything that we **see, sense or feel.***



EXPERIENTIAL FACTORS



VALUED ASSETS AND STRENGTHS

- The wonderful **views**.
- The **dramatic topography** and inspirational landscape.
- **Secluded, atmospheric spots** and range of **favourite places** within The Chevin.
- The range of **interesting and attractive features** across The Chevin.
- Place for people to **join in** with activities - and develop a sense of **community and belonging**.
- **Huge positive impact on mental health** for people being able to see and get out into nature.
- Opportunity to **plane spot!**

ISSUES AND CHALLENGES

- Some **viewpoints** are not well-mapped.
- Traffic can disrupt the sense of **tranquillity and safety in parts**.
- **Some features are being lost** due to management / budget constraints.
- **Inclusivity** is an issue on The Chevin?
- **Feeling safe** is an issue on The Chevin?
- **Feeling welcome** is an issue on The Chevin?

Work done on The Chevin at Present

Our analysis can feed ideas for the future

Every  could be protected and celebrated in some way

Every  is an opportunity for improvement.

Landscape Character Assessment

5. We developed landscape character assessments of The Chevin and evaluated the relative sensitivity of each of the character areas.

Landscape Character Assessment (LCA) is the process of **identifying and describing variation in character of the landscape**.

Once undertaken, areas of landscape can be **evaluated** in terms of the quality, value, sensitivity and capacity to accommodate change.

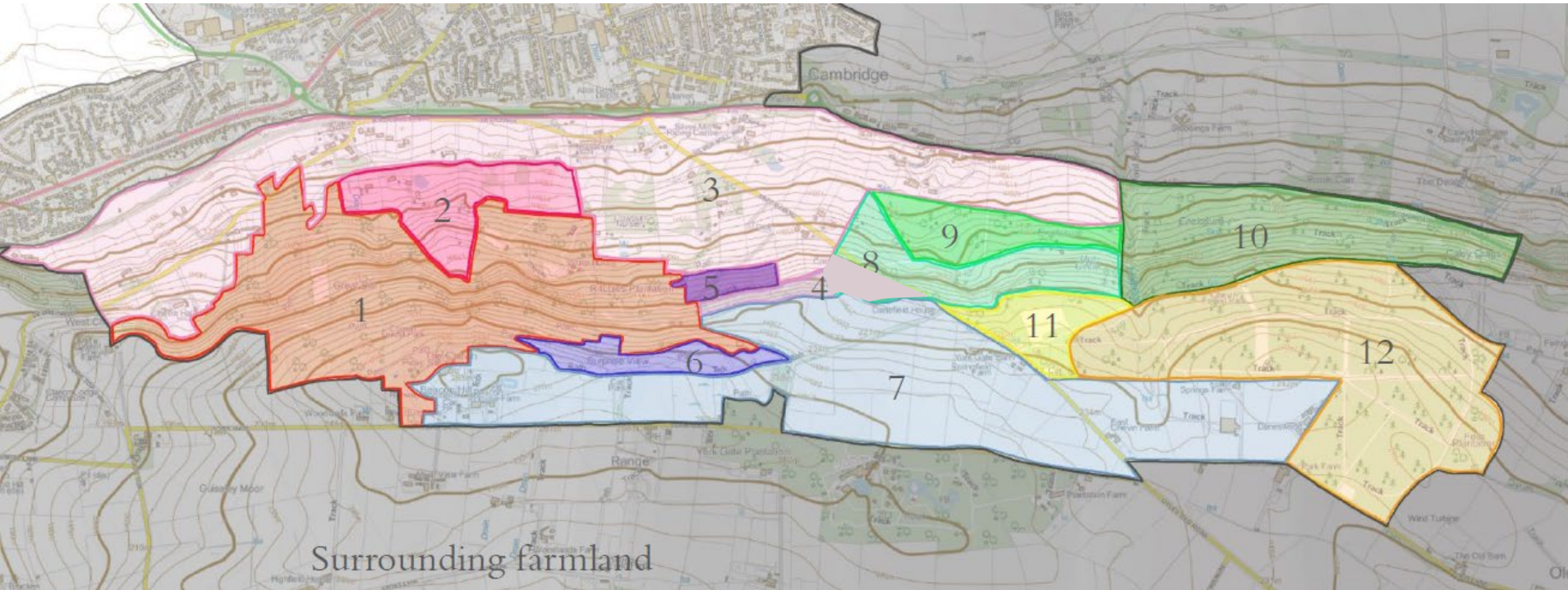
Landscape Character Assessments are used for

- planning policies and decisions
- sensitivity and capacity studies
- land management plans
- landscape and visual impact assessments
- masterplans and place-making
- minerals and renewable energy planning
- green infrastructure strategies
- agri-environment schemes
- forest and woodland strategies
- waterways strategies

LCAs are also useful for monitoring change across the landscape.

Landscape Character Assessment

5. We developed landscape character assessments of The Chevin and evaluated the relative sensitivity of each of the character areas.



1. Chevin Broadleaf Woods
2. Chevin Orchard and Sloped Pastures
3. Otley Fringe and Farmland
4. Chevin Quarry Corridor
5. Maby's Heath
6. Chevin Top
7. Chevin Open Pastures
8. Chevin Forest Conifers
9. Holbeck Woods
10. Caley Crag Woods
11. East Chevin Open Woodland
12. East Chevin Mixed Plantation

Landscape Character Areas were mapped and named

1: WHITE HOUSE BROADLEAF FOREST

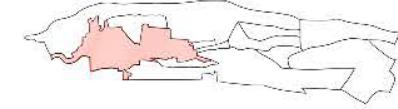


Figure 19- Dense canopy



Figure 21- Fagus sylvatica sketch

Figure 20- Drystone maze

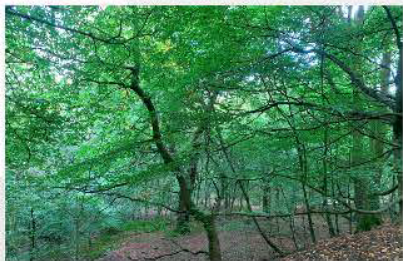


Figure 22- Bare forest floor

- This LCA covers a large portion of the Chevin and is characterized by a variety of deciduous broadleaved trees. The most notable trees being Rowan (*Sorbus x thuringiaca*), Beech (*Fagus sylvatica*), Oak (*Quercus petraea* & *Quercus rubra*) and sycamore (*Acer pseudoplatanus*).
- One notable feature in this LCA is the drystone maze constructed by the drystone walling association.
- This part of the woodland is distinctive due to its very dense canopy that blocks out light and creates a very enclosed landscape. The forest floor is very bare due to the lack of light and creates a seemingly undisturbed and open ground level.
- The Whitehouse visitor center is located in this LCA, a prominent feature throughout the chevin that demonstrates clear evidence of human intervention.
- There are many trails and public byways throughout this LCA and a private road track leading to the Whitehouse.
- This LCA is rather steep as it is heading up the Chevin towards surprise view. There are trails as well as very steep steps to aid walkers.

Assessment	Description	Score
Historical/ Cultural Assessment	Historical Designations- 1/3 Cultural richness- 2/3 Recreational Access- 1/3 Age of habitat- 3/3	7/12
Ecological/ Biodiversity Assessment	Natural Designations- 1/3 Period of development- 3/3 Habitat richness- 2/3	6/9
Visual/ Perceptual Assessment	Hierarchy of viewpoints- 1/3 Tree size/age- 3/3 Presence of water in views from this LCA- Small pond by the Whitehouse- 1/3	5/9

Ideas for the future

Students have made proposals to improve The Chevin's resilience, through;

- **Proposing how habitats can be protected, extended and managed.**
- **Introducing nature-based solutions.**
- **Proposing ways to manage and facilitate visitors through**
 - **New and improved trails and paths**
 - **The provision of new and improved facilities for particular user groups.**
 - **The provision of a new visitor centre (4 existing buildings provided for the task), infrastructure associated with it.**

These ideas have also fed into the values and changes questionnaire,.

Ideas for the future include

WAYS TO GET AROUND

- Safe Connections between the East and West parts of the Chevin and slowing the road.
- Better connections to Otley Town Centre.
- Accessible and circular pathways and loops.
- Designated mountain bike trails.
- New or better signage.
- Even a zip wire!



View of the Road



--- EDUCATIONAL PATH

Length : 2.7 km (1.7 miles)
Level : ★★
Approximate Walking Time: 1 hour



--- RECREATIONAL PATH

Length : 5.8 km (3.6 miles)
Level : ★★★
Approximate Walking Time: 2 hours



--- HIKING PATH

Length : 9.6 km (6.0 miles)
Level : ★★★★★
Approximate Walking Time: 3 hours



--- CYCLING PATH

Length : 3.5 km (2.2 miles)



--- HORSE RIDING PATH

Length : 4.0 km (2.5 miles)

--- SECONDARY PATH

IMPROVEMENTS OF WAYFINDING SYSTEM AND FACILITIES



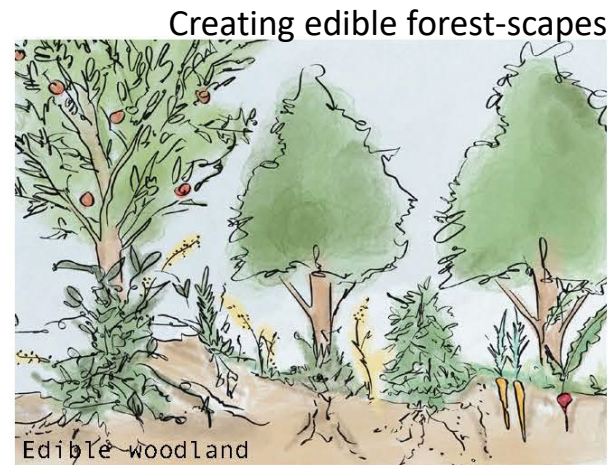
Ideas for the future include

WAYS TO AID NATURE RECOVERY

- Re-naturalising habitats and extending heathland.
- Woodland diversification and creating clearings
- Ways to diversify the existing plantation and soften its edges.
- Ways to capture and manage run off.

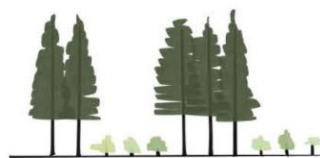


Extending the heathland, introducing agro-forestry and reinstating hedgerows



Creating clearings to break up the woodland – as places to walk through, rest and to create habitat

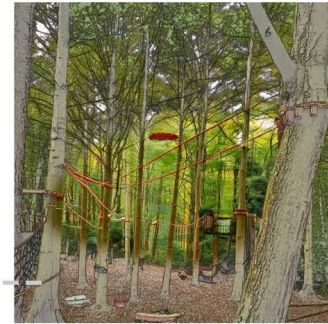
Diversifying areas of the coniferous plantation to include broadleaf trees (this will take decades!



Ideas for the future include

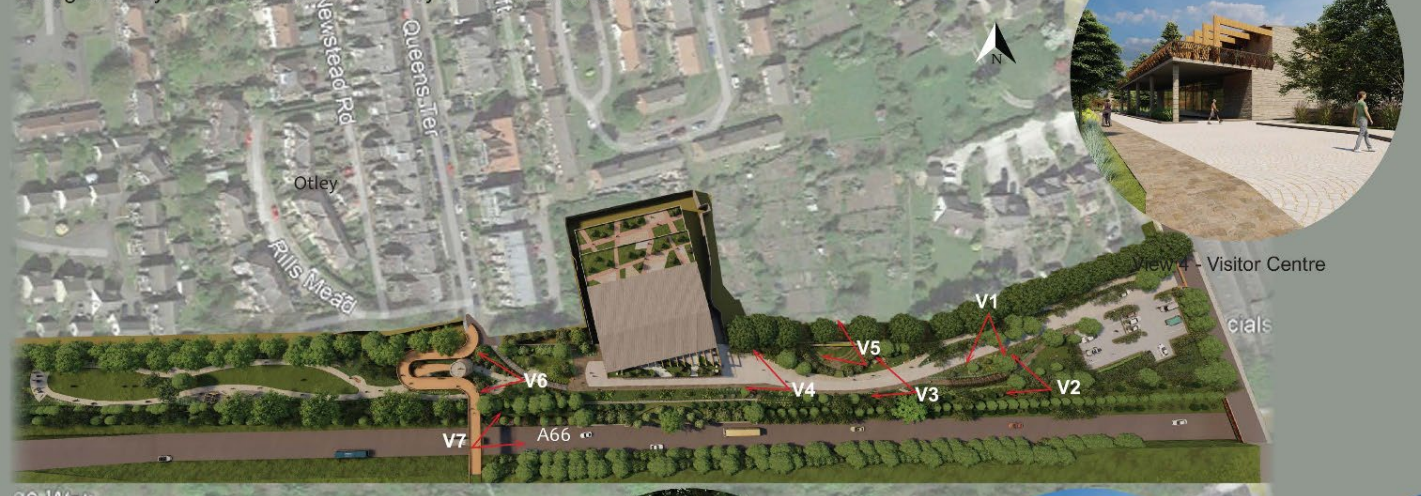
THINGS TO DO AND WAYS TO USE AND UNDERSTAND THE CHEVIN

- Various ideas for recreation including play, a zip wire, a light trail, an outdoor theatre.
- Facilities for making art.
- New sculptures.
- New visitor facilities – from viewing stations to visitor centres, a campsite and education areas.

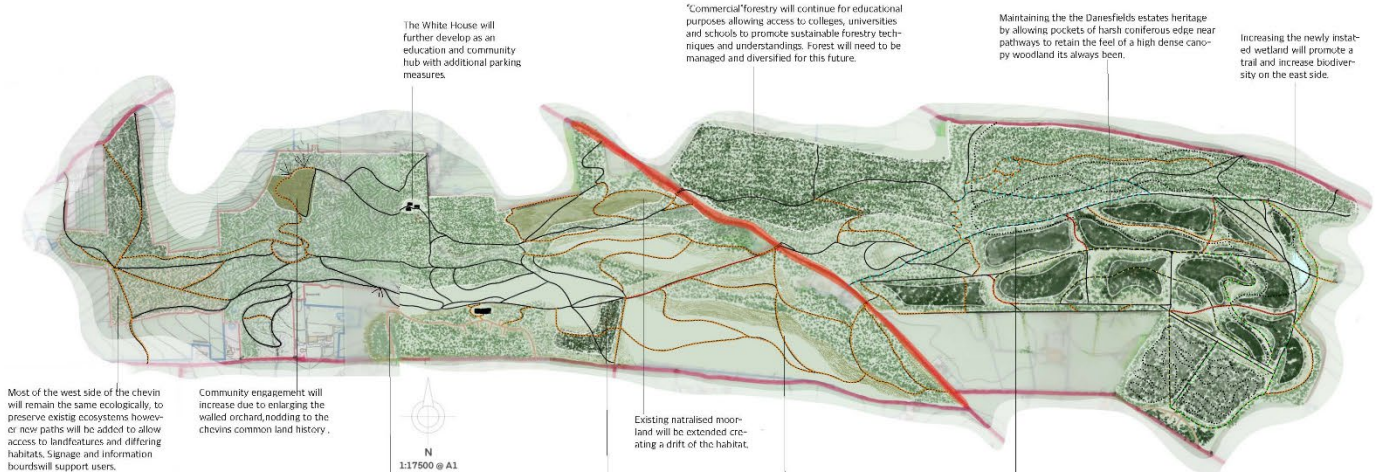


Linear Park - Otley

A Proposed Linear Park, incorporating a Visitor Centre, along the Residential Edge of Otley Town, acting as a key connection between Otley Town and Chevin Forest.



DRIFTS ON THE CHEVIN



The White House will further develop as an education and community hub with additional parking measures.

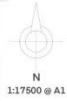
"Commercial" forestry will continue for educational purposes allowing access to colleges, universities and schools to promote sustainable forestry techniques and understandings. Forest will need to be managed and diversified for this future.

Maintaining the the Danesfields estates heritage by allowing pockets of harsh coniferous edge near pathways to retain the feel of a high dense canopy woodland its always been.

Increasing the newly instated wetland will promote a trail and increase biodiversity on the east side.

Most of the west side of the chevin will remain the same ecologically, to preserve existig ecosystems however new paths will be added to allow access to landscatures and differing habitats. Signage and information boards will support users.

Community engagement will increase due to enlarging the walled orchard, nodding to the chevins common land history.



Existing naturalised moorland will be extended creating a drift of the habitat.

Woodland play facilities and picnic areas are located close to the visitors centre means families can experience the chevin without having to move far from the main car park.

Access road to visitors centre will allow drivers to get a glimpse of surprise view after emerging from dense woodland, to then wrap around and into the car park set behind the building.

Connecting both sides of the chevin allows for extended deciduous planting and restoration of agricultural pastures.

Circular routes allow visitors to complete varied length and terrain trails and experience the essence of the chevin without having to walk its entirety. Stopping at viewpoints, natural features etc.



DECIDUOUS WOODLAND AND WOODLAND EDGE CREATION



By managing the existing coniferous plantations and changing their form subsequently the perimeter of these woodlands increases. This means:

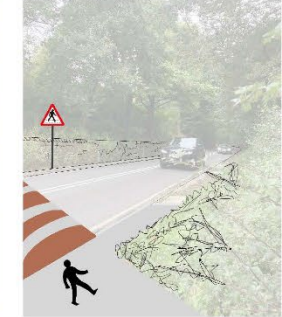
- Deciduous planting can take place, to soften harsh edges and create a new habitat within this area.
- Native shrub layers, aided by planting and to be naturalised over time, will increase biodiversity and result in a sustainable woodland edge.
- Pathways will populate within this new habitat and seasonal interest will increase on the site.
- Clearings made by this new proposal will provide way finding points and areas for sculptural art, information boards and areas for play.
- Increasing deciduous cover will allow longevity of the site and species mixes will be adaptable to climate change.

Furthermore: increased tree cover on proposed agricultural fields between west and east chevin will allow corridors for wildlife and connect deciduous habitats in a drift across the site.

ACCESSIBILITY



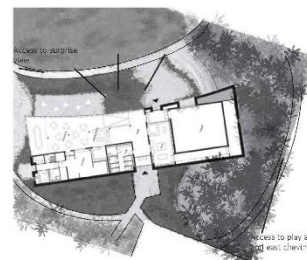
TRAFFIC CALMING ZONE



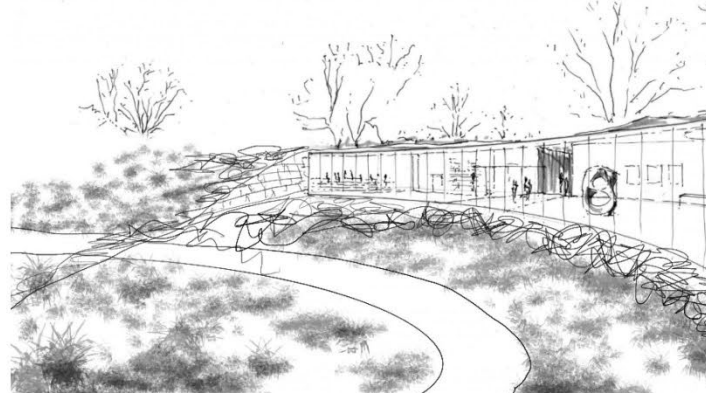
VISITORS CENTRE

The Weston - Yorkshire sculpture park
Feilden Fowles

The visitors centre will be located at surprise view, however not at the highest peak of the viewpoint to maintain 360 views and view towards Leeds. Assimulating this structure into the existing agricultural land outside the chevins boundary will maintain existing heathland and furthermore creation as naturalising will be encouraged around the centre. Glass frontage of the building will provide comfort and shelter for all year viewing. Shop, cafe and small museum will attract visitors and provide funding for ongoing project across the chevin. Parking will be situated behind the centre and sheltered by vegetation to allow harmony within the rural setting.



Plan taken from architects website and rendered to show textures and connections to the surprise view.



Architects sketch rendered to show the visitor centres assimilation into heathland landscape at surprise view.

MULTIFUNCTIONAL RECREATION



Visual to show mountain hike trails structured throughout one of the existing conifer plantations which will be transformed into a multibreed woodland. This will provide a designated area with separate parking and a bike hub. Therefore, reducing erosion and habitat damage across the site. A series of bike routes will also run across the east chevin and will keep bikers off pathways.

CULTURE AND COMMUNITY ENGAGEMENT



Locally made sculptures will be placed within woodland clearings and at pathway junctions. A donated or temporary Henry Moor or Barbara Hepworth sculpture will complement and define a space and bring a new type of visitor. Otley schools, community group or local artist could also provide such exhibits.

EXPERIENCE



Increasing visitor experience by adding circular routes which allow exposure to multiple habitats, facilities and view points along the way. Furthermore, enhancing these habitats around pathways such as the increase area wetland which will be home to a wooden walkway wide enough for buggies and wheelchairs and a winding path alongside the stream. It also means that the weekly park run can change its route regularly.

Way finding will be improved onsite to allow for an easy visitor experience, wooden engraved and colour coded signs will be used and information boards will provide site wide locational pointers. Restoring paths has also been considered an example of this is the path leading from the footbridge upto Johnny lane which will be repaired with permeable aggregate. Signs and information also needs to be implemented along the main roads on how to access facilities. As well as the town needing formal navigation to the chevin.

PLAY



Concept sketch interpretation of play area. Ensuring apparatus for a variety of ages and including a barefoot walk for both children and adults alike. Made from natural materials to blend into the surroundings. Encouraging imaginative play by allowing space for den building, mud kitchens, little houses and sand pits, to keep children of all ages entertained.

CONCLUSIONS

I believe that my proposal sets the chevin up for the future ecologically and environmentally with its plans to increase tree cover and woodland edges, restore and enhance agricultural land, diversifying existing woodland and promoting naturalisation and habitat creation.

Furthermore, I have provided a visitor experience by creating a visitors centre, mountain bike hub and trails, an enhanced woodland experience, play facilities, restored connections to Otley town, new pathways and much more.

Finally, I believe that many of these individual implementations can occur in whatever timeframe to accommodate for funding, site restrictions and Friends of Otley chevins capacity as a community group. The overall proposal is meant to be tangible and adaptable.

Eveline Edmunds

- Visitor centre located opposite The Royalty pub with additional tree planting to screen car parking and extend wildlife corridors
- Extended orchard / common land
- Improve the White House as an educational and community hub
- Use the forest as a sustainable forestry educational hub.
- Diversify the woodland edge and increase wetlands to the east of East Chevin.
- Create a safe east-west crossing over East Chevin Road.
- Create accessible pathways and dedicated mountain bike trails.
- Provide a natural play area and additional artworks.
- Additional signage and information boards.

Drifts on the Chevin

Visitor Centre

Drifts on the Chevin aims to unite existing ecosystems and improve access for the community and visitors. Landform and extensive woodland creation conceals a visitors centre and car park. This blends into existing heathland at Surprise View, framing views out across the valley.

Eveline Edmunds

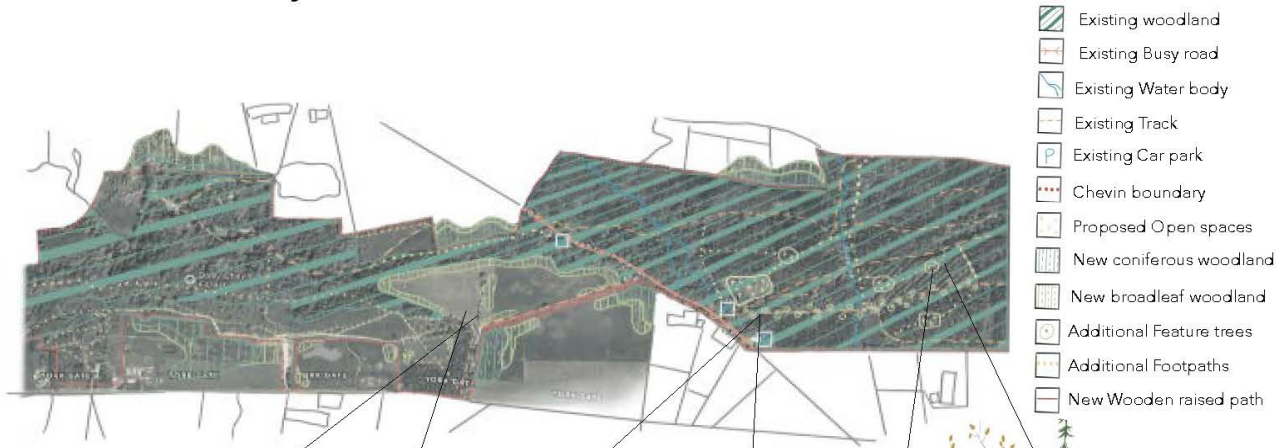
Looking at how a new visitor centre, within new woodland, could look and work located within the agricultural fields at Surprise View.



The Otley Chevin

Katie Edwards

N

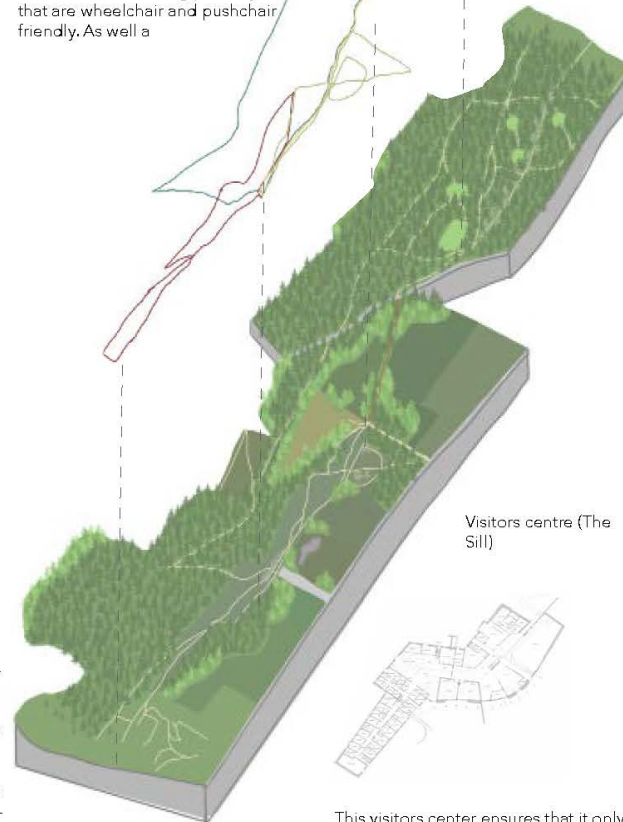
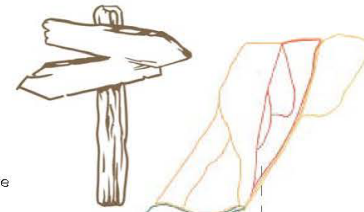


Pathways :

- Roe Deer Trail
- Fox Trail
- Grey Squirrel Trail
- Wood Mouse Walk
- Weasel Walk
- Wood Butterfly Walk

The trails are longer and steeper, and the walks are shorter, flatter and more accessible.

Interconnectivity across the Chevin is a crucial part of ensuring that people want to come and experience the whole of the site. This starts with adding pathways that are wheelchair and pushchair friendly. As well a



This visitors center ensures that it only has a minimal impact when looking at the landscape as it is built into the existing land. Creating half the building to seem as if it is no more than a patch of grassland.

1:7500 @ A3



Raised wooden path, this is found along the south edge of the chevin and is a crucial pathway connecting both the west and eastern sides of the site. This design creates a more inclusive pathway for the public.

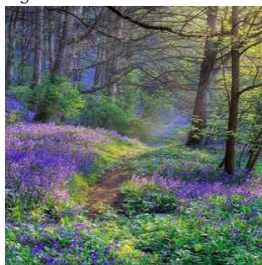


This helps to create an increase in biodiversity as it means that nature remains undisturbed by people walking through it.

This pathway stays in theme with the Chevin as currently on the far East side there is a similar one already there.



Silver birch trail, this trail creates a unique experience for people as it has large amounts of colourful ground cover and shrubs. These shrubs complement the grey bark of the Betula Pendula whilst creating a more natural looking woodland floor.



This pathway appeals to everyone as it creates a whimsical feeling, as the sun beams through the trees onto the beautiful range of flora and fauna below the canopy. This magical theme correlates with the pre existing fairy doors found on trees along the pathways of the Chevin.



Clearings within the dense forest create natural picnic areas which are protected from the wind. All of these areas are close enough to a car park to be accessible to everyone who wants to visit the Chevin and be surrounded by nature.

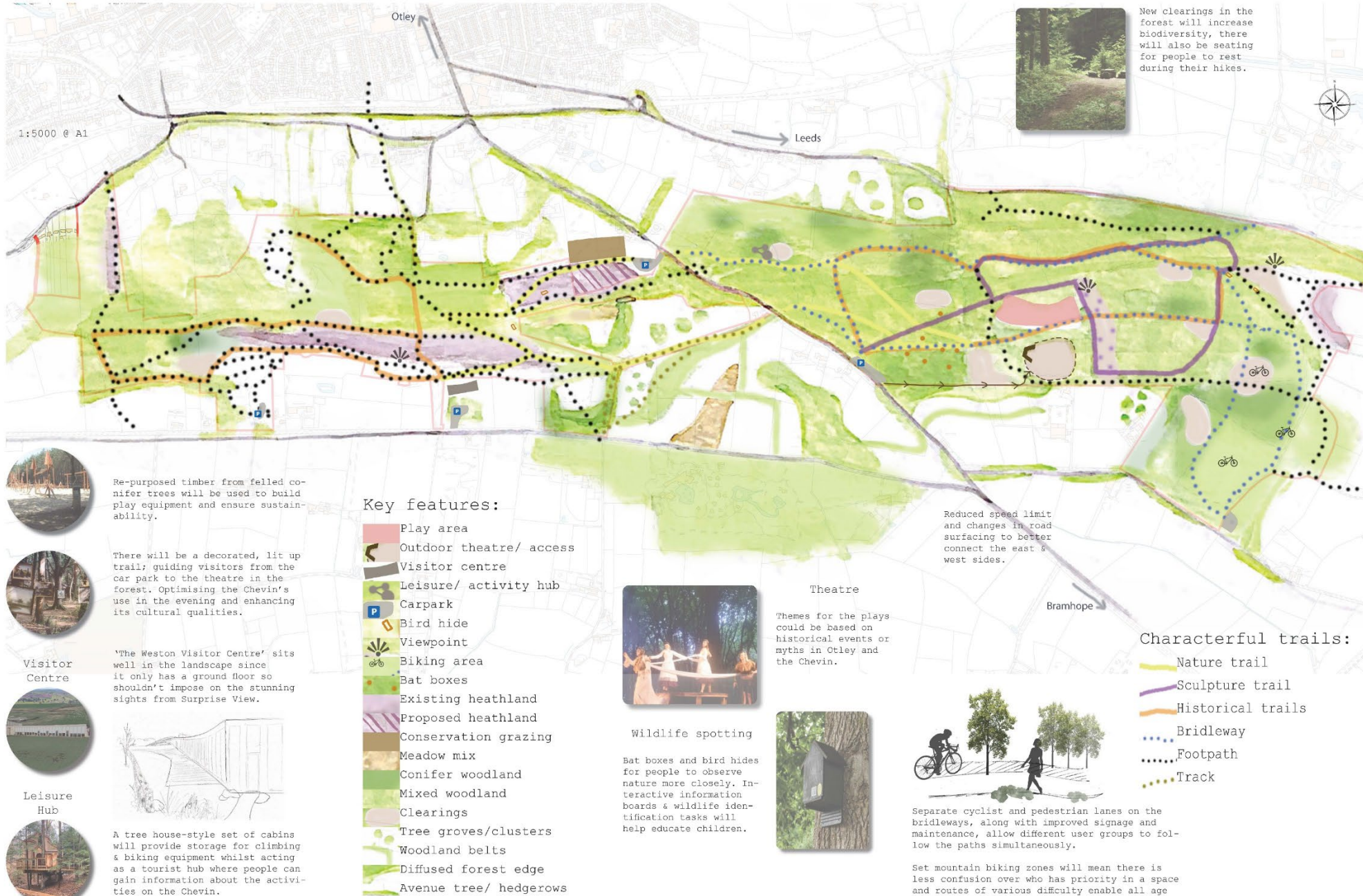


Having these areas allows people to feel fully submerged in nature as the trees also acts as a sound barrier to protect against noise pollution from nearby roads. Unlike the seating at the surprise view.

Cultural & Ecological Connections on Otley Chevin

Iyla Leith

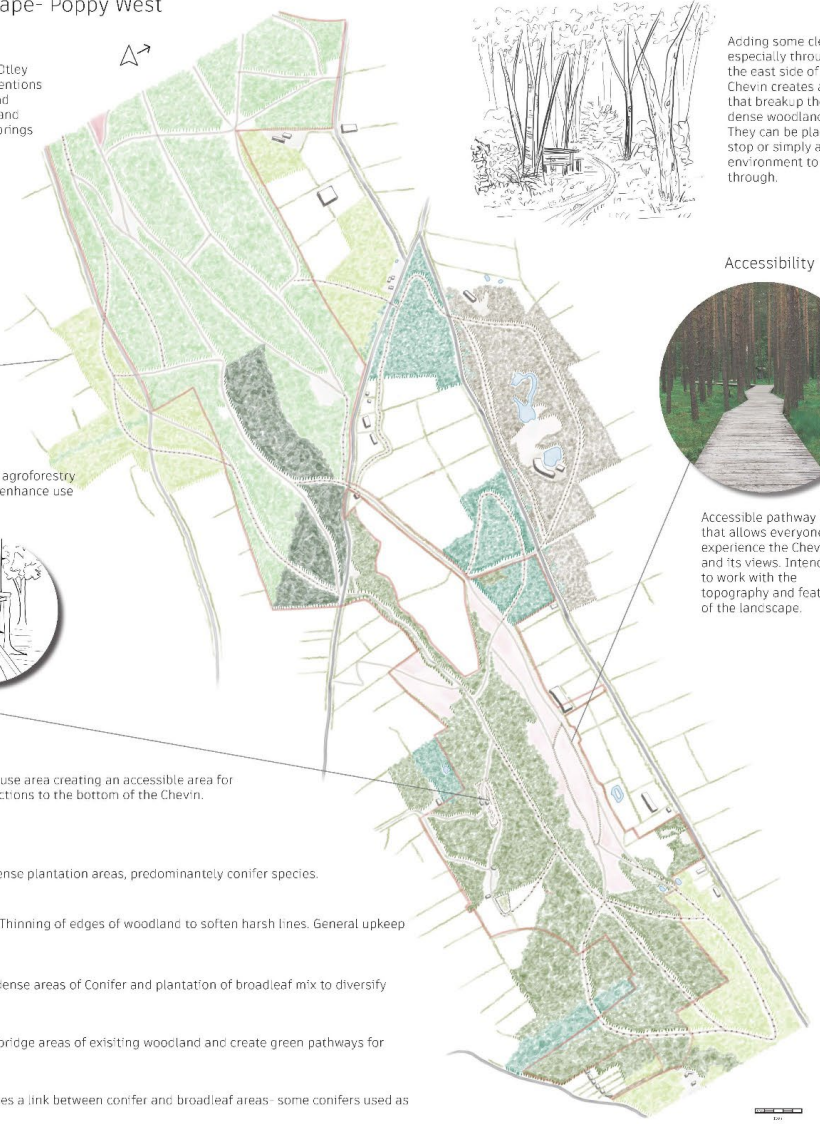
- Extended heathland.
- Extended tree groves, hedgerows and into the agricultural lands surrounding the Chevin.
- Conservation grazing
- Clearings in the commercial forest and diffused woodland edges.
- Wildlife corridors.
- New pathways network (history / nature / sculpture).



Diversifying Otley Chevin

LA501- Resilient Rural Landscape- Poppy West

My design aims to **enhance** the current parts of Otley Chevin and to **connect** and **extend** it with the intentions of benefitting those who use the site- wildlife and visitors. Thinking about usage, access, facilities and connections, I have come up with a design that brings the multiple layers of the chevin together.

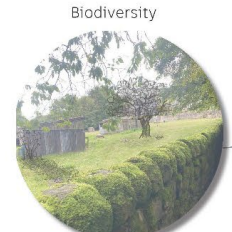


Adding some clearings especially throughout the east side of the Chevin creates areas that breakup the dense woodland. They can be places to stop or simply a new environment to walk through.



Accessibility

Accessible pathway loop that allows everyone to experience the Chevin and its views. Intended to work with the topography and features of the landscape.











Biodiversity

Enhancement of Hedgerow boundaries and agroforestry to help connect areas of the woodland and enhance use of the Chevin.



Play

Integrated play in the repurposed Whitehouse area creating an accessible area for the residents of Otley and extending connections to the bottom of the Chevin.

- Key:
-  Existing Mixed Woodland- Thinning of dense plantation areas, predominately conifer species.
 -  Existing Majority Broadleaf Woodland- Thinning of edges of woodland to soften harsh lines. General upkeep of dead wood and felling of disease.
 -  Existing Conifer Woodland- Thinning of dense areas of Conifer and plantation of broadleaf mix to diversify area.
 -  Planted Native Broadleaf Mix- Added to bridge areas of existing woodland and create green pathways for wildlife.
 -  Planted Broadleaf and Conifer Mix- Creates a link between conifer and broadleaf areas- some conifers used as nurse trees.
 -  Existing Heathland- Keep maintained by removal of young trees.
 -  New paths- Added to create optimal routes and connect/link all of the chevin.
 -  Planted Native Hedgerow Mix- Create green pathways, aid wildlife and restore ancient hedgerow field boundaries.

The use of local and natural materials enhance the landscape whilst simultaneously allowing the building to blend in.



Poppy West

- Extended woodland and pathways
- New connected hedgerows
- Re-managed woodland for biodiversity
- Accessible paths and boardwalks.
- Visitor centre located in the agricultural field near Surprise View. sculpture).

Lauren Harrop

- Enhanced pathway network connect existing and new features.
- New incidental play
- Visitor centre located south of Maby's Field, in the existing agricultural land, using access along the existing track
- New signage
- Re-managing the woodland to diversify it.

Legend

- Red Line Boundary**
- Existing Broadleaved Woodland**
Managed by cutting on a 12-25 year rotation. Materials from coppicing to be used within the forest as grey elephant, bark and woodchips. Mainly broadleaved mainly broadleaved on overstory this woodland will grow over a small period in woodland.
- Existing Coniferous Woodland**
Managed by coppicing on a 12-25 year rotation. Materials from coppicing to be used within the forest as grey elephant, bark and woodchips. Mainly coniferous mainly broadleaved on overstory this woodland will grow over a small period in woodland.
- Existing Mixed Woodland - Mainly Broadleaved**
Managed by cutting on a 12-25 year rotation with natural regeneration after 10 years. Mainly broadleaved on overstory this woodland will grow over a small period in woodland.
- Existing Mixed Woodland - Mainly Coniferous**
Managed by cutting on a 12-25 year rotation with natural regeneration after 10 years. Mainly coniferous on overstory this woodland will grow over a small period in woodland.
- Existing Assumed Woodland**
Managed by grass removal and then natural regeneration to create a more diverse, native woodland.
- Existing Felled Woodland**
Managed by coppicing on a 12-25 year rotation. To be replanted as continuous woodland after each harvest.
- Existing Traditional Orchard**
Managed through regular maintenance, head pruning to improve the health of large old trees. Standard trees could also be added to protect the traditional orchard trees from the wind weathered stone.
- Existing Grassland**
Managed through natural regeneration.
- Existing Nature Reserve**
Mainly managed to take a landscape management actions, primarily focusing on the trees and fauna within the reserve.
- Existing Car Parks**
To be retained and used as overflow or accessible car parks.
- Existing Paths**
Information from foot, people earth and the chevin historical trail paraps.
- Proposed Meadow Grassland**
Planting area where grass is mown, swathe of grass left to flower with grass seed left between trees.
- Proposed Mixed Woodland - Mainly Broadleaved**
Planted to create a buffer between the new visitors centre and views of the chevin. Mainly broadleaved on overstory this woodland will grow over a small period in woodland.
- Proposed Coniferous Woodland**
Planted to create a buffer between the new visitors centre and views of the chevin. Mainly coniferous on overstory this woodland will grow over a small period in woodland.
- Proposed Native Shrub Mix**
To be used as a buffer between the new visitors centre and views of the chevin. Mainly native shrub mix on overstory this woodland will grow over a small period in woodland.
- Proposed Natural Regeneration**
Shrub mix area of vegetation to be left as natural regeneration.

- Proposed Specimen Trees**
Used as feature trees along routes such as Phoenix avenue.
- Proposed Paths**
Tribble roadways, all primary routes are accessible for everyone, including wheelchairs and prams.
- Primary Route**
Tribble roadways, all primary routes are accessible for everyone, including wheelchairs and prams.
- Secondary Routes**
Native road paths that are not suitable for wheelchairs but are still accessible for most.
- Tertiary Routes**
Native road paths with steep banks, only accessible for those who are fit and able to walk.
- Incidental Play**
Incidental play and shelter shown on A1 page.
- Key Features**
Details on A1 sheet.
- Proposed Road**
Access to new Proposed Car Park.
- Updated Access Road**
To be main access to The Chevin, with priority traffic banking, footways, and the road.
- Newly Proposed Visitors Centre**
Along the Toxmore Sculpture Park visitors centre footings.

Proposed key features that link together the proposed paths throughout The Chevin (shown in yellow circles on the plan)

Main 19 features of The Chevin (relates to numbers on plan):

- SSSI The Great Dip
- Yorkgate Quarry Nature Reserve
- The Orchard
- Dry Stone Wall Circle
- Vacca Wall
- The White House
- Jenny's Cottage
- Surprise View
- Packhorse Tracks
- Historic Rock Outcrops
- Memorial for Head Forester of Danefield
- Distinctive Oak Tree
- Chippendale Ride - Iron Age Settlement
- Bridge Over Holbeck River
- Scheduled Monument - Iron Age Settlement
- Open views through the fire ride
- Clearfell in forest to show open views
- Keepers Cottage

Proposed signage and wayfinding correlates with the colour coded routes and the key features of The Chevin (shown as purple triangles on the plan)

Proposed accessible paths along the primary route (shown as a yellow dashed line on the plan)

Proposed play features of natural incidental play found along the primary route (Shown as pink ovals on the plan)

Amended access road to prioritise access routes to new visitors centre

Section showing how the proposal of a hierarchy of paths across the chevin will link with all of the designations as well as the overall natural character of The Chevin A-A

Thinking about how the woodland could be diversified.

Management Techniques

Existing Broadleaved Woodland

Managed by felling by group selection on a 40 - 60 year rotation. Materials from felling to be used within the forest e.g play equipment, board walks and furniture. Main aim is to improve health of broadleaved woodland.

Existing Coniferous Woodland

Managed by coppicing on a 12-20 year rotation. Materials from coppicing to be used within the forest e.g benches and signage. Coppiced woodland to be replanted with mixed woodland mainly broadleaved so eventually this woodland will grow into a multi aged mixed woodland.

Existing Mixed Woodland - Mainly Broadleaved

Managed by felling by group selection with natural regeneration after felling to create a more diverse native woodland.

Existing Mixed Woodland - Mainly Coniferous

Managed to create a two storey forest, maintained by group selection with shade tolerant conifers at shrub/sub-canopy level and the main species for both canopies is to be coniferous. This will create a really dense, dark woodland, which will give an interesting experience for visitors.

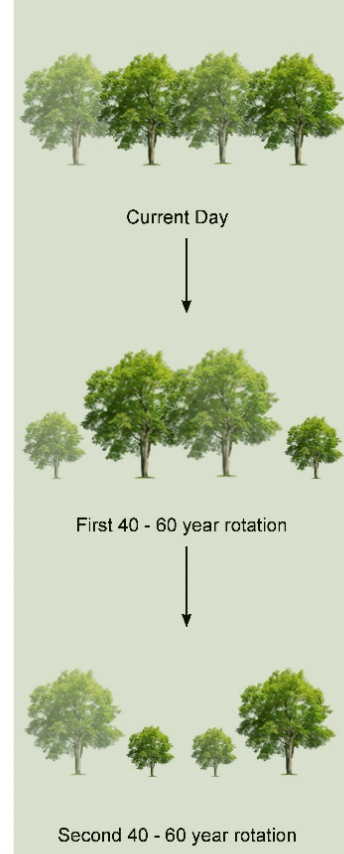
Proposed Mixed Woodland - Mainly Broadleaved

Planted to create a similar character as the Chevin forest. To be managed through felling from group selection on a 40 - 60 year rotation to improve biodiversity.

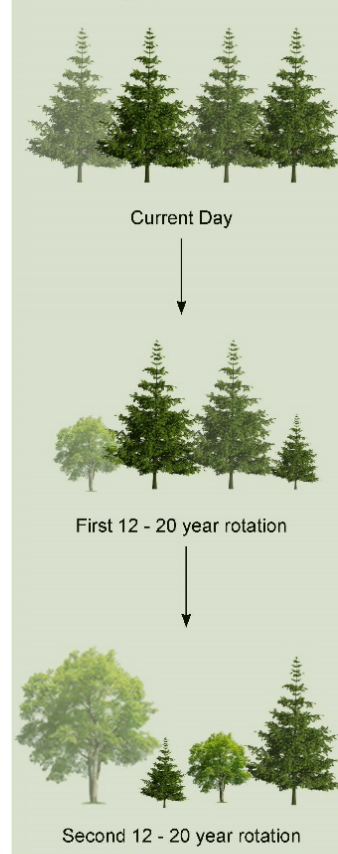
Proposed Coniferous Woodland

Planted to be managed as clearfell woodland, with materials to be used within the forest, e.g. boardwalks, furniture, play equipment and signage.

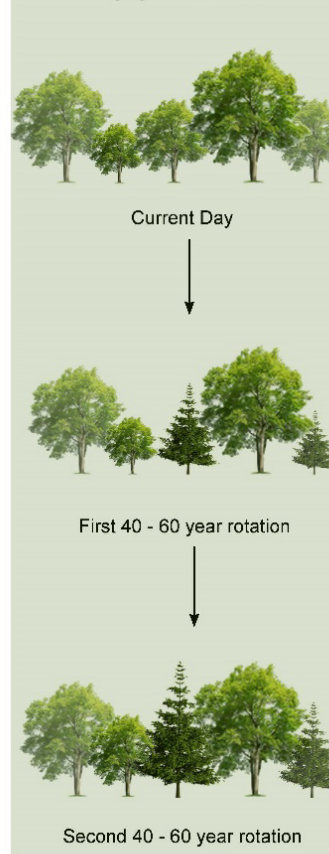
Broadleaved Woodland - Felling from Group Selection



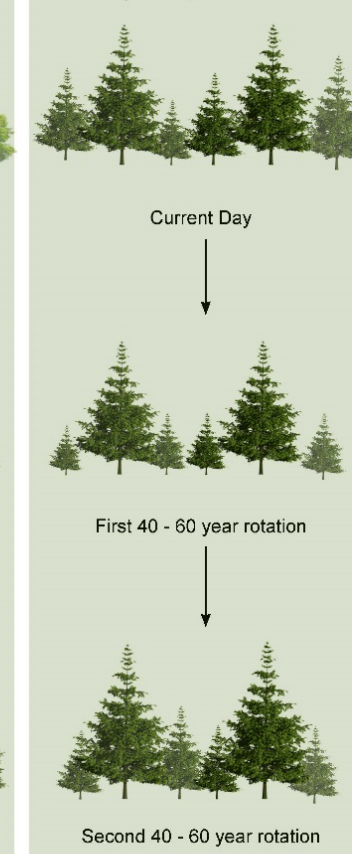
Coniferous Woodland - Coppicing then Planting Broadleaved Woodland



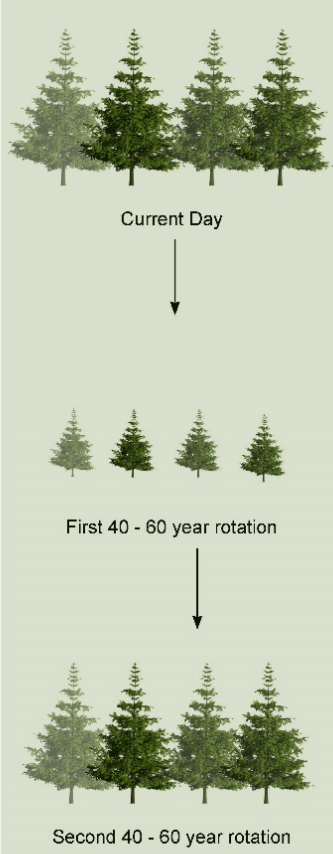
Mixed Broadleaved Woodland - Felling by Group Selection



Mixed Coniferous Woodland - Felling by Group Selection



Coniferous Woodland - Clearfell





Finn Stevenson

- New Visitor Centre and Mountain Bike Centre located on East Chevin.

DESIGN ELEMENTS

Visitor Centre
(Lookout, Cafe, Bike shop, information)

Heathland Habitat
(New habitat similar to surprise view, low vegetation, rocky crags and playful integrated nature)

Playground
(Rock & timber themed playground, inspired by Pounds Park in Sheffield.)

Art & Sculpture
(Walk through metallic sculpture)

Mountain Bike Access
(Pump Track, Entrance to Otley Chevin Mtb trails)

Increased Parking

POSITIVE IMPACTS

- Outdoor spaces for Families improved
- The Chevin will have an official centre for leisure and activities
- Public facilities and refreshments
- Increased biodiversity through planting trees and heather
- Community engagement through mountain biking
- Accessible for all
- Small changes to existing woodland habitat, minimal disturbance to wildlife
- Concealed by woodland surroundings

CHEVIN OTLEY FOREST PARK STRATEGIC MASTERPLAN AND WOODLAND MANAGEMENT PROPOSAL

By Shing Yan Kwok (SKY) student ID 77493117, MALA, LA501/701

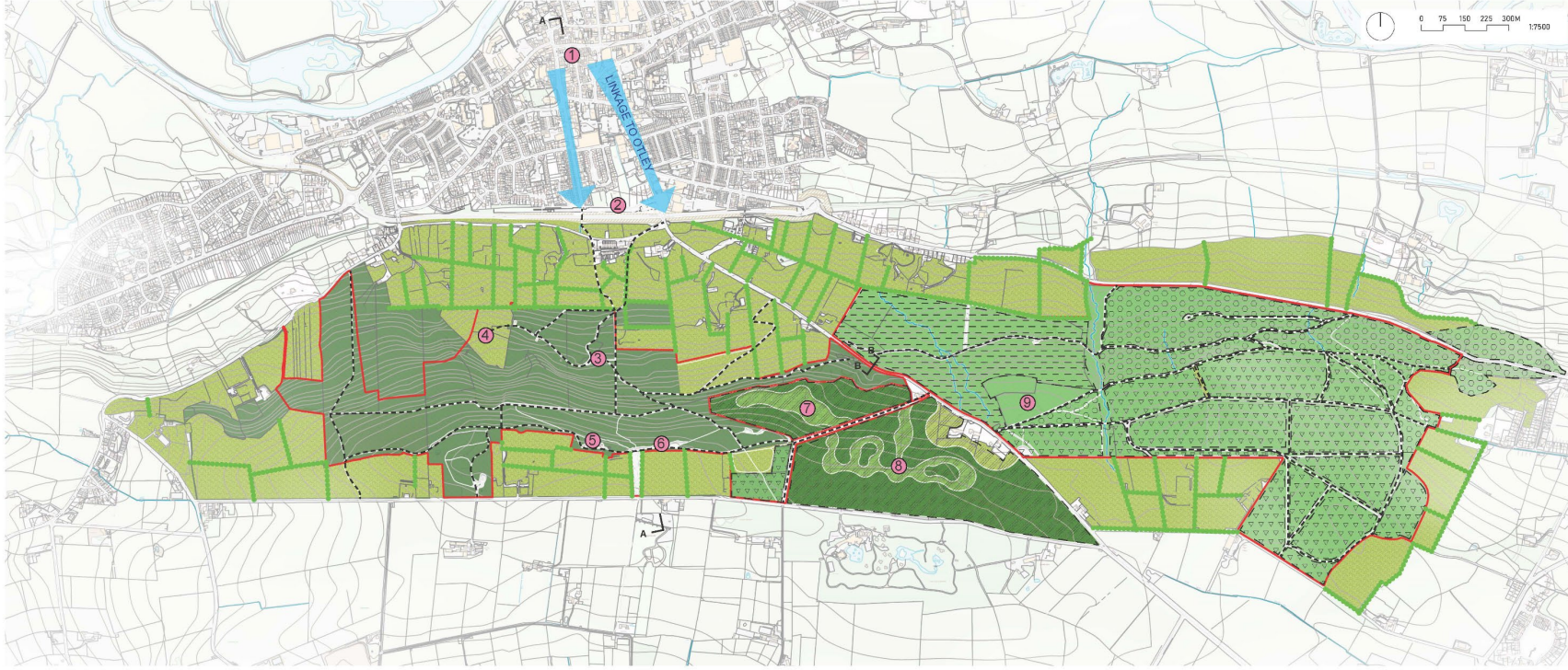
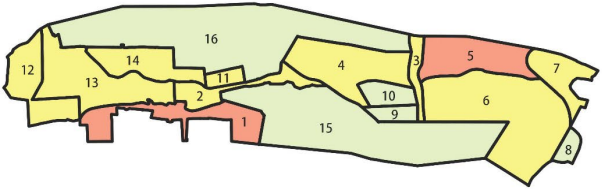
The management and development proposal focuses on the decades following the current 2016-2026 management plan. Key components include the introduction of a new visitor center and viewing platform to enhance the visitor experience and attract visitors. Additionally, improvements to the route network and a woodland management plan aim to preserve the woodland as a valuable resource for future generations. This proposal includes five main objectives.

- OBJECTIVES**
1. Improve the linkage between Otley Market Place and Chevin
 2. Work with existing landscape and topography
 3. Enhance the visiting experience on recreational and educational usages
 4. Reduce the conflicts between various users
 5. Increase the woodland area and improve the existing woodland habitat

LANDSCAPE SENSITIVITY STUDY

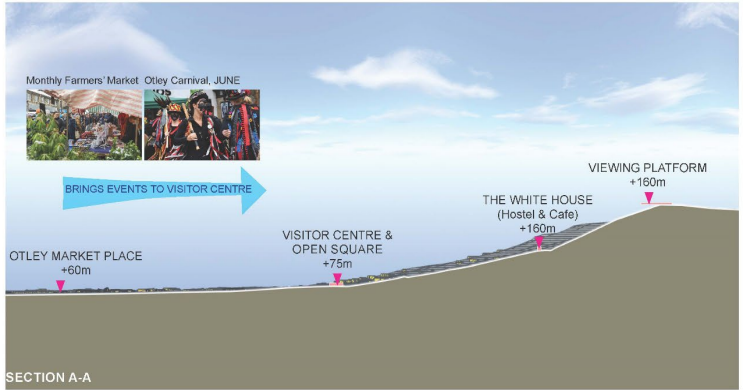
The proposals are based on the landscape sensitivity study. Areas 9, 10, 15 and 16, identified as the primary development zones, have low landscape sensitivity and a high potential for accommodating new uses. As a result, the visitor center, camping site, picnic area and forest play are planned for these locations.

- High:** susceptible to change/ its values are high/ it is unable to accommodate the relevant type of development without significant character change or adverse effects.
- Medium:** potential to change/ its values are medium/ it may have some potential to accommodate the relevant type of development in some defined situations without significant character change or adverse effects.
- Low:** not susceptible to change/ its values are low/ it can accommodate the relevant type of development without significant character change or adverse effects.



LEGENDS

- 1 Otley Market Place
- 2 Visitor Centre
- 3 The White House Converted to Hostel & Cafe
- 4 Educational Orchard
- 5 Surprise View
- 6 Viewing Platform
- 7 Camping Site
- 8 Open Lawn (Picnic Area)
- 9 Forest Play
- Existing Main Pedestrian Path
- Existing Woodland (Low Maintenance)
- Proposed Silvicultural Regeneration Uneven Aged | Single Selection Systems
- Existing Woodland (High Maintenance)
- Existing Farmland or Open Area
- Proposed Extension of Woodland
- Proposed Lawn
- Proposed New Afforestation Even Aged | Mixed Plantation Mixed-Species Planting
- Proposed Silvicultural Regeneration Even Aged | Group Shelterwood Scots Pines
- Proposed Silvicultural Regeneration Uneven Aged | Group Selection Systems Mixing of Tree Species
- Proposed Silvicultural Regeneration Uneven Aged | Single Selection Systems Mixing of Tree Species
- Proposed Trees along the existing farmland's boundaries (reflecting the pattern from 1890s)



LINKAGE TO OTLEY

The proposed visitor centre and open square, located between Otley Market Place and Chevin Otley, is intended to improve the linkage and draw both local residents and visitors from the town. It will also serve as a venue for various seasonal events and monthly farmers' markets held. Meanwhile, the proposed location is similar to the old site of Otley railway station.

VISUAL LINKAGE

The proposed visitor centre, along with the White House and Viewing Platform, creates a visual connection. The structure will be visible from both higher and lower points to attract visitors to explore the site.



IMPROVEMENT OF EXISTING EAST CHEVIN ROAD

At present, the pedestrian path runs directly alongside the vehicle road, impacting the walking experience due to noise and air pollution from passing cars. To address this, a 1.5-meter planting set back is proposed to create a buffer and enhance the separation between pedestrians and traffic.

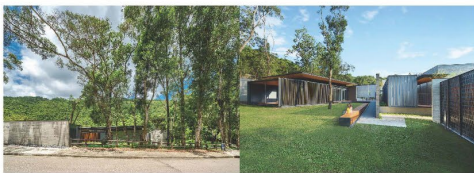


Sky (Shing Yan Kwok)

- Using the dismantled railway to create a visitor hub.
- Overnight stays on the chevin - white house as a hostel and a campsite to the south.
- Shuttle bus service.
- New pathways.
- Viewing platforms.
- Extended hedgerows
- Improved roadside paths along busy surrounding roads.
- Diversifying woodland.

2 VISITOR CENTRE

The complex of buildings is modest in scale, consisting of single-story structures that blend seamlessly with the natural environment and provide an open square for events. The low-carbon footprint timber from cut of Scots Pine will be used for construction.



4 EDUCATIONAL ORCHARD

The existing orchard has been transformed into an educational orchard designed to inspire younger generations to value and protect woodlands. Monthly events and tours will be organized. This orchard serves as a key feature along the educational path.



6 VIEWING PLATFORM

A linear timber viewing platform has been designed to enhance scenic views and provide a rope net bed for relaxing or stargazing. Low-carbon timber sourced from cutted Scots Pine will be used for the platform's flooring, railing, and structural elements.



9 FOREST PLAY

Design of forest play is based on the existing topography to minimize tree removal. Additionally, the play equipment is positioned to meet safety standards. Timber materials are preferred for the play equipment to blend seamlessly with the forest environment.



Sky (Shing Yan Kwok)

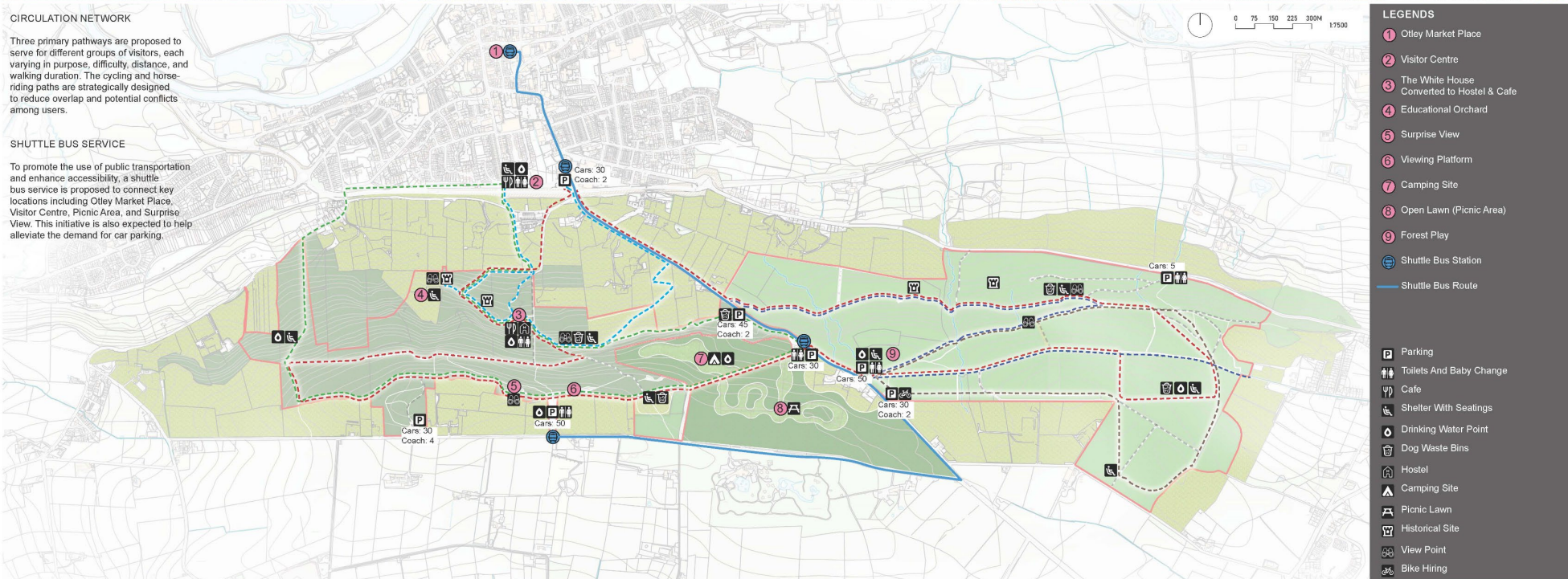
- Diagram to show proposed routes and visitor infrastructure.
- Includes proposed species for woodland expansion.

CIRCULATION NETWORK

Three primary pathways are proposed to serve for different groups of visitors, each varying in purpose, difficulty, distance, and walking duration. The cycling and horse-riding paths are strategically designed to reduce overlap and potential conflicts among users.

SHUTTLE BUS SERVICE

To promote the use of public transportation and enhance accessibility, a shuttle bus service is proposed to connect key locations including Otley Market Place, Visitor Centre, Picnic Area, and Surprise View. This initiative is also expected to help alleviate the demand for car parking.



LEGENDS

- 1 Otley Market Place
- 2 Visitor Centre
- 3 The White House Converted to Hostel & Cafe
- 4 Educational Orchard
- 5 Surprise View
- 6 Viewing Platform
- 7 Camping Site
- 8 Open Lawn (Picnic Area)
- 9 Forest Play
- Shuttle Bus Station
- Shuttle Bus Route

- Parking
- Toilets And Baby Change
- Cafe
- Shelter With Seatings
- Drinking Water Point
- Dog Waste Bins
- Hostel
- Camping Site
- Picnic Lawn
- Historical Site
- View Point
- Bike Hiring

EDUCATIONAL PATH

Length : 2.7 km (1.7 miles)
Level : ★★
Approximate Walking Time: 1 hour



HIKING PATH

Length : 9.6 km (6.0 miles)
Level : ★★★★★
Approximate Walking Time: 3 hours



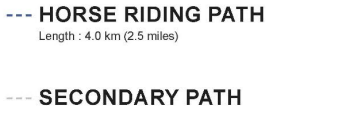
RECREATIONAL PATH

Length : 5.8 km (3.6 miles)
Level : ★★★
Approximate Walking Time: 2 hours



CYCLING PATH

Length : 3.5 km (2.2 miles)

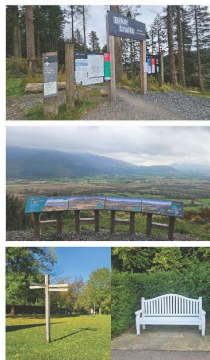


HORSE RIDING PATH

Length : 4.0 km (2.5 miles)

SECONDARY PATH

IMPROVEMENTS OF WAYFINDING SYSTEM AND FACILITIES



PROPOSED TREE SPECIES

Item	Tree Species	Tree Family	Description	Value to Nature	Native Regions	Height	Spreading	Leaf Persistence	Blooming Color & Period	Fruit Type & Fruiting Period	Life Span
A	Rowan (Sorbus aucuparia)	Rosaceae	Smaller tree with feathery leaves and bright red berries.	Known for its vivid red berries, associated with folklore, and a favorite for birds.	Europe, Asia	8-15 m	4-7 m	Deciduous	White, May - June	Bright red berries, Aug - Oct	80 - 120 years
B	Hazel (Corylus avellana)	Betulaceae	One of the most useful trees for its bendy stems and as a conservation saviour.	Help stabilize soil and prevent erosion, provide shelter for birds and insects.	Europe, Western Asia	8-12m	4-8m	Deciduous	Yellow catkins, Jan - Feb	Hazelnut, Aug - Sep	50- 80 years
C	Silver Birch (Betula pendula)	Betulaceae	Slender tree with white bark and delicate, drooping branches.	Striking white bark, important for various fungi and insects.	Europe, Asia	15-30 m	4-8 m	Deciduous	Yellowish-green, April - May	Small winged nutlets, Aug - Sept	60 - 100 years
D	Sycamore (Acer pseudoplatanus)	Sapindaceae	Non-native but widespread in the UK.	Fast-growing, sometimes considered invasive but beneficial for some wildlife species.	Central Europe, Western Asia	20-35 m	10-20 m	Deciduous	Yellow-green, April - May	Winged seeds (samaras), Sept - Oct	200 - 400 years
E	Sessile Oak (Quercus petraea)	Fagaceae	Large native tree with a broad canopy, long lifespan.	Supports diverse wildlife, long-lived, iconic to British woodlands.	UK, Europe, Western Asia	20-35 m	15-25 m	Deciduous	Yellow-green, April - May	Acorns, Sept - Oct	500 - 1000 years
F	Scots Pine (Pinus sylvestris)	Pinaceae	Tall, native conifer with reddish bark and long needles.	The UK's only native pine, often found in upland areas, used for reforestation.	Europe, Asia, Scotland	25-35 m	5-8 m	Evergreen	N/A	Cones, Sept - Oct	150 - 300 years

Shing Yan Kwok's flythrough and stills creating a linear park along the disused railway

WALKING SEQUENCES OF ANIMATION ON VISITOR CENTRE PROPOSAL



Station Road Entrance



Terraced Bridge connecting to the forest park



Souvenir Shop



Historical Timeline



Museum & Event Square



Cafe and Restaurant

Shing Yan Kwok's flythrough and stills creating a linear park along the disused railway



Food Trucks & Outdoor Dining Area



Car Parks



Greenary Buffer



Information Panels & Washroom



Bicycle Parking & Shuttle Bus Station

Link of Animation

https://1drv.ms/v/s!AmuQntI_jissnf1fILFc7CpP4ra-7fA?e=cGa7du



Scan the QR code for the video.

Design Aims for Chevin Forest

Ecological Integration: The design incorporates grove woodlands, open habitat woodlands, glades, and edge planting to promote biodiversity and enhance the ecological health of Chevin Forest.

Accessibility and Safety: Separated pedestrian paths, bicycle tracks, and bridleways ensure safe and accessible routes for all visitors, accommodating diverse activities while minimizing conflicts between different user groups.

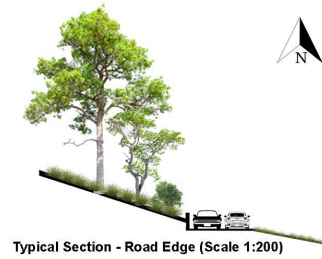
Visual Appeal and Engagement: The inclusion of edge planting along roads and pedestrian areas enhances the visual appeal of the landscape, creating inviting transitions between the forest and built environment.

Recreational Opportunities: Proposals such as the expert bicycle ride, kids' play area, zip line, juice stall kiosk, and the Fun Forest adventure sports facility aim to provide varied recreational opportunities that encourage visitors to engage actively with the forest. The Wood Museum Block will offer educational resources about the local ecosystem, while the Tree House provides elevated viewpoints for a unique experience in nature.

Visitor Experience: The large-scale photo frame and juice stall kiosk enhance the overall visitor experience by creating memorable moments and promoting healthy, local food options.

Through these design elements, the vision for Chevin Forest is to create a sustainable, engaging, and harmonious environment that attracts and inspires visitors while preserving its natural beauty and enhancing biodiversity.

*"The Woods are lovely, dark and deep,
But we have responsibilities to keep,
And trees to plant before we rest,
And care to give, to grow them best!!"*



Typical Section - Road Edge (Scale 1:200)



Typical Section - Pedestrian Pathway (Scale 1:100)



1. Visitor Centre

The proposed visitor center will be constructed using locally available materials that reflect the architectural style of Otley market. This design approach aims to create a welcoming and culturally resonant space that connects visitors to the local heritage. By utilizing familiar materials and design elements, the center will enhance the aesthetic appeal of the area while providing essential services and information to those exploring Chevin Forest.

The Visitor Centre includes a Reception Area, Information Desk, Gift Shop, Café & Juice Kiosk, Restrooms & Changing Facilities, as well as a Multipurpose Hall and Meeting Room.

2. Zip Line

This proposal outlines the installation of a zip line that begins in Chevin Forest and terminates at a new visitors center located on the edge of a residential area. As the second-largest zip line in England (extending approximately 600 meters), this exciting attraction will offer visitors a thrilling experience while providing a unique perspective of the forest and surrounding landscape. The zip line aims to enhance the appeal of Chevin Forest, drawing more visitors to the area and promoting outdoor adventure activities.



3. Juice Stall Kiosk

This proposal introduces a juice stall kiosk within Chevin Forest, offering visitors access to free fruits harvested from the orchard plantation nearby. The kiosk will also serve fresh juice made from these fruits, providing a refreshing and healthy option for guests to enjoy while they explore the forest. This initiative aims to enhance the visitor experience by promoting local produce, encouraging healthy



Master Plan (Scale 1:5000)



7. Expert Bicycle Ride
This proposal outlines an expert-level bicycle ride through the steep woodland areas of Chevin Forest. While the challenging terrain will test riders' skills, it will enhance the character of the forest and provide a unique cycling experience. To preserve the natural character of the land and landform, special ride way decks will be utilized, ensuring minimal impact on the environment. Additionally, a record-keeping system for the fastest rides could be implemented, encouraging riders to return and improve their times. This competitive element not only adds excitement but also motivates cyclists to explore Chevin Forest more frequently, boosting visitor numbers and fostering a vibrant outdoor culture.

8. Pedestrian Bridge

A pedestrian bridge will connect Vacca Wall to the White House area, spanning above the existing steep stone steps. This wooden bridge will provide panoramic viewpoints, enriching the visitor experience and fostering a deeper connection with the woodland environment.



9. Photo Frame

This proposal presents a large-scale photo frame, larger than human size, for visitors to overlook the Otley town area to the north of Chevin Forest. Serving as both a photo frame and a vantage point, it encourages guests to capture memorable moments in a stunning landscape. By leveraging social media, this installation aims to enhance Chevin Forest's visibility and popularity, attracting more visitors and celebrating the beauty of the area.

- 1. Visitor Centre
- 2. Zip Line
- 3. Juice Stall
- 4. Existing Dib House
- 5. Existing White House
- 6. Surprise View
- 7. Expert Bicycle Ride
- 8. Pedestrian Bridge
- 9. Frame
- 10. Pedestrian Bridge
- 11. Wood Museum Block
- 12. Fun Forest
- 13. Tree House
- 14. Kids Play Area

LEGEND

- Pedestrian Walkway
- Bicycle Track
- Bridleway
- New Woodland - Grove
- New Woodland - Open Wooded Habitat
- New Woodland - Glade
- New Woodland - Edge Planting
- Heathland
- Agroforestry
- Existing Woodland
- SUDS
- Roadway Connecting Visitor Centre and Wood Museum.
- Parking / Entry Points
- View Points
- Zip Line
- Chevin Boundary v
- Existing Pathway to be retained

Sheet 1/3

Razi Mohamed Abdul Razack

- Improving and extending habitats.
- Separated pedestrian paths (from roads)
- Dedicated bicycle paths & bridleways.
- Recreational opportunities - zip line, play area, expert bike track, a museum about Wood, juice kiosk, a high ropes facility.
- A visitor centre and linear park along the disused railway with a new connecting bridge.
- Edge planting.



10. Pedestrian bridge connecting East and West Chevin Forest, enhancing accessibility and allowing seamless movement across the landscape for visitors.



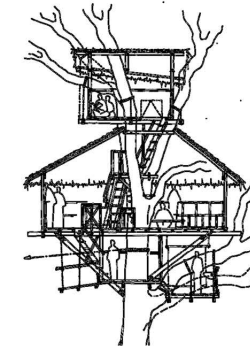
11. Wood Museum Block
The Wood Museum Block is designed to harmonize with the surrounding woodland by using natural wood elements and traditional materials, creating a structure that blends seamlessly into the forest environment. Its architecture reflects the textures and colors of the landscape, fostering a strong connection to the natural surroundings. The building will house an **Educational Centre, bike rental services, and restrooms**, all integrated into a structure that respects and complements the forest's aesthetic and ecological integrity.



12. Fun Forest
The Fun Forest is an adventure wood sports facility set within the open habitat woodland of Chevin Forest. This exciting attraction will offer visitors a variety of outdoor activities, encouraging people of all ages to engage with nature through adventure and exploration. By integrating active recreation into the woodland, Fun Forest aims to draw more visitors to Chevin Forest, promoting outdoor physical activity and a deeper appreciation of the natural landscape. The facility will be carefully designed to blend with the surrounding habitat, preserving the forest's ecological balance while enhancing its appeal as a destination.



13. Tree House
The Tree House features multiple levels of viewpoints that provide panoramic views of the northern side of the landscape. Designed to enhance visitors' experience in the forest, each level offers unique perspectives and opportunities for observation, encouraging a deeper connection with the natural surroundings. The structure not only serves as a recreational space but also allows guests to appreciate the beauty of the environment from various heights, fostering an immersive experience in the woodland.



14. Kids Play Area
The proposed kids' play area will feature play equipment crafted from sustainable materials, designed to blend naturally with the surroundings. Enclosed by edge planting, the area provides a safe, immersive play environment that encourages children to connect with nature while respecting the forest's ecology.



- | | | |
|-------------------------|--|--|
| 1. Visitor Centre | Pedestrian Walkway | Roadway Connecting Visitor Centre and Wood Museum. |
| 2. Zip Line | Bicycle Track | P Parking / Entry Points |
| 3. Juice Stall | Bridleway | View Points |
| 4. Existing Dib House | New Woodland - Groove | --- Zip Line |
| 5. Existing White House | New Woodland - Open Wooded Habitat | --- Chevin Boundary v |
| 6. Surprise View | New Woodland - Glade | |
| 7. Expert Bicycle Ride | New Woodland - Edge Planting | |
| 8. Pedestrian Bridge | Heathland | |
| 9. Frame | Agroforestry | |
| 10. Pedestrian Bridge | Existing Woodland | |
| 11. Wood Museum Block | SUDS | |
| 12. Fun Forest | | |
| 13. Tree House | | |
| 14. Kids Play Area | | |

Razi Mohamed Abdul Razack

- Improving and extending habitats.
- Separated pedestrian paths (from roads)
- Dedicated bicycle paths & bridleways.
- Recreational opportunities - zip line, play area, expert bike track, a museum about Wood, juice kiosk, a high ropes facility.
- A visitor centre and linear park along the disused railway with a new connecting bridge.
- Edge planting.

Chevin Forest Park

Clémence Braud L501



Clemence Braud

- Linking East and West Chevin
- Improving accessibility
- Providing a play area
- Improving safety

Link the two distinct part of the Forest

Link the two parts of the forest from an ecological point of view, which means connecting the different existing habitats by creating new planting areas.

Then to connect it for the visitors. That's mean to make them want to go through the road to discover more of the Chevin and it will be achieved mainly by the new place for the Visitor Centre. The idea is to locate it in the middle of the forest to facilitate access from both sides. It also takes advantage of the gentle slope to integrate it into the landscape and facilitate accessibility. The placement of it encourages the use of more sustainable transport option (walkable path from Otley, close to houses, keep cars «far» away to create a special entrance/atmosphere in the park).



Semi-natural space created by mowing

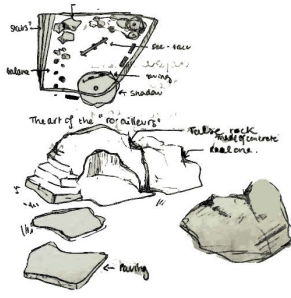
Make it accessible for everyone

By creating a special path that goes from the car park to the surprise view and then to the new visitor centre, accessible to everyone (families, disabled people).

A family-friendly place with an accessible playground, both educational and recreational, that awaken the different senses of the child with different types of rocks and wood mixed together (reminiscent of the characteristics of the Chevin) to create hiding places, safe climbing areas... This encourages the child's creativity and independence, but also makes them more aware of the landscape.



Reference : Parc de la Genette - Phytolab

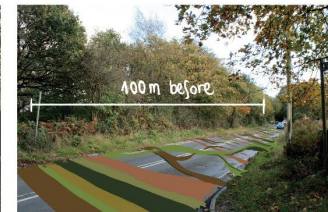


Concrete, accessible path

Make it safe

Because it's necessary to connect the different parts of the forest and improve the safety of its visitors, but also to encourage people to use more sustainable forms of transport (such as walking). Finally, the tranquillity of the area will also improve the experience of visitors and the well-being of wildlife.

- There is different option available :
- 1 - Reducing the speed limit to 50 km/h
 - 2 - A pedestrian crosswalk
 - 3 - A pedestrian crosswalk and a speed bump or a chicane
 - 4 - Illustrations on the road as a reminder of the forest



Razi Mohamed's detailed exploration of a new visitor centre and linear park along the disused railway.

Linear Park - Otley

A Proposed Linear Park, incorporating a Visitor Centre, along the Residential Edge of Otley Town, acting as a key connection between Otley Town and Chevin Forest.



View 4 - Visitor Centre



View 5 - Amphitheater with a feature wall



View 6 - Zip Line Tower & Pathway connecting Otley



View 7 - Bridge that connects Otley and Chevin Forest



View 1 - Pathway



View 2 - Pathway



View 3 - Gritstone Sculptures



Axonometric View



Master Plan (Not to Scale)

Razi Mohamed Abdul Razack
MA Landscape Architecture 2024/25
Module: 701 Design Impact
Leeds Beckett University



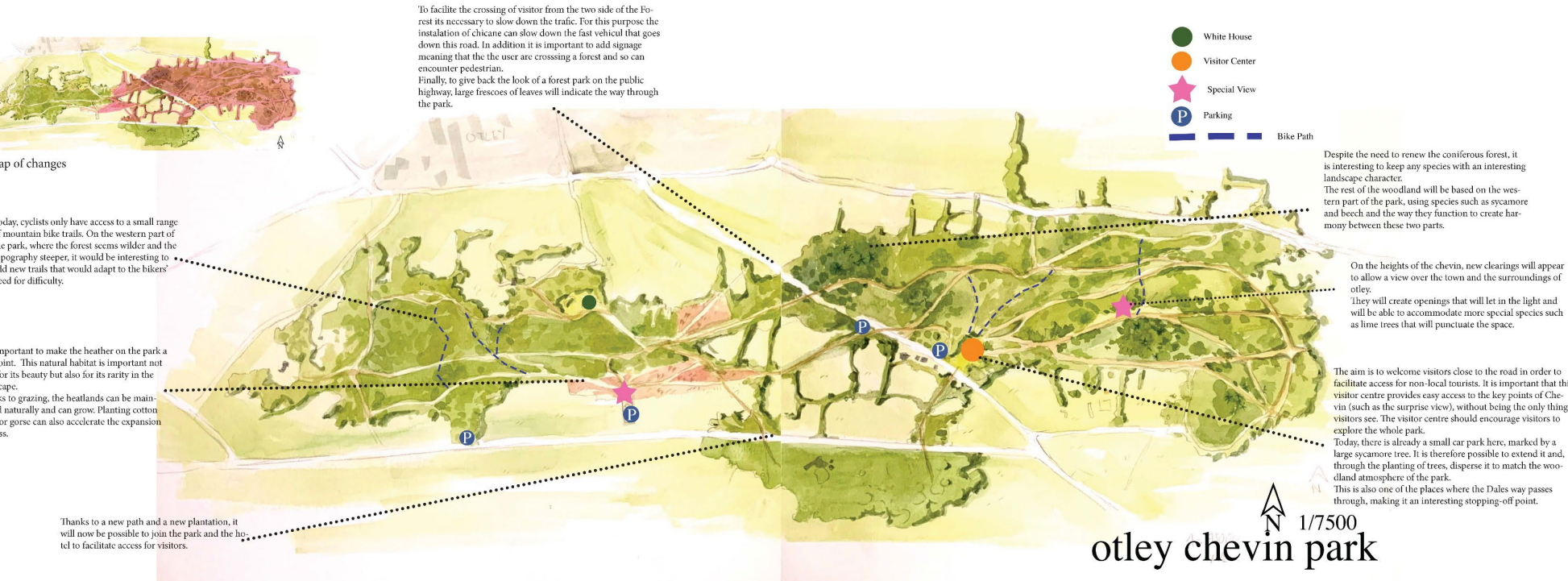
OTLEY CHEVIN FOREST

Laure DESPROGES-GOTTERON
2015

This project is located in West Yorkshire, in the Town of Otley. The forest is located on a ridge formed by the wharfe dale. This makes the park a special location to see a panorama of the country, what's more, the forest park is home to many historical remains, including bronze age remains. The whole area is home to interesting flora and fauna, as well as numerous activities such as dry stone walling and rock climbing.

Clemence Braud

- An improved / feature crossing with road realignment on East Chevin Road.
- Improved connections between the Chevin and the Chevin Hotel
- Heathland expansion and maintenance - use of grazing.
- Wildlife corridors, hedgerow establishment.



The Visitor Center



View of the Chevin from the Town

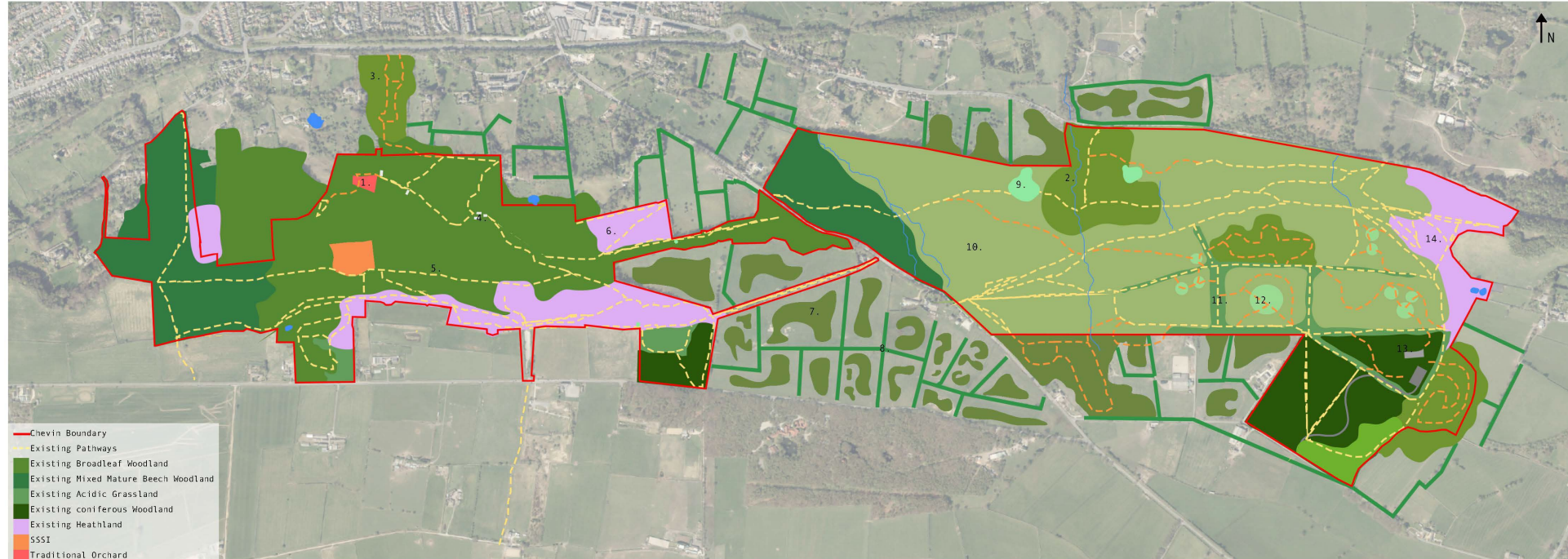
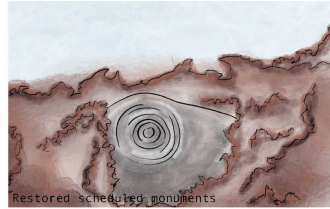
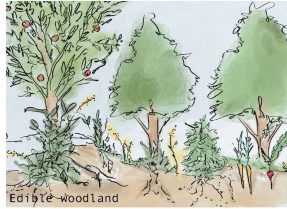


View of the Road

Otley Chevin Masterplan

Aims

- Improving user experience
- Re-establish lost or fading habitats
- Reconnecting the town of Otley to the Chevin
- Increasing tree coverage



- Chevin Boundary
- Existing Pathways
- Existing Broadleaf Woodland
- Existing Mixed Mature Beech Woodland
- Existing Acidic Grassland
- Existing coniferous Woodland
- Existing Heathland
- SSSI
- Traditional Orchard
- Scheduled Monuments
- Existing Building
- Existing Water Features
- Proposed Dense Broadleaf Woodland
- Proposed Edible Forest
- Proposed Woodland Glade
- Proposed Coniferous Woodland
- Proposed Planting on Field Boundary
- Proposed Car park
- Proposed Visitor Center
- Proposed open Broadleaf Woodland
- Proposed Access Road
- Proposed Pathways

1. Traditional orchard to be maintained in line with existing management plan.



3. An edible forest to give easy access to fresh produce for locals within short walking distance from Otley Town Center



4. The existing visitor centre is a hub for outdoor education running workshops and events around foraging and different ways to use the produce collected.



5. Updated signage across the Chevin directing visitors towards main elements of the landscape as well as information about historical sights and monuments, making the Chevin more accessible and easily transversible.



6. Management plan for retaining and restoring heathland encouraging the breeding of green hairstreak butterflies

7. Silvo-pastoral agroforestry practices should be implemented in the grazing fields outside the Chevin boundary

10. Proposed dense broadleaf woodland replacing the existing mixed and coniferous plantations.



8. Hedgerows should be restored and re-established along with tree planting along the field boundaries

9. Restoring the scheduled monuments with regular maintenance, information signage extended pathways



11. Existing woodlands to be retained for reducing wildfire spread and encouraging Biodiversity through the woodland edge

12. Woodland glades for recreational activities



13. The new visitor centre contains a shop and cafe

14. Existing Heathland is re-seeded to encourage breeding of Green Hairstreak Butterflies



Freya Appleby

- Improved user experience
- Habitat reestablishment
- Improved connections to Otley town – for people and wildlife
- Edible forests hark back to common land.
- Visitor centre to offer foraging and outdoor education workshops.
- Updated signage.
- Management plan to focus on reestablishing heath for the Hairstreak butterflies.
- Silvo-pastoral forestry on grazing lands.
- Hedgerow restoration and establishment.
- Ancient monuments to be restored.
- Broadleaf woodland to replace coniferous plantation.
- More woodland glades on Danefield.
- New visitor centre east of Danefield.

Future projects on The Chevin

- LCC are already mapping existing trees from the Tree Spotters Guide, mapping woodland, and revising the Chevin Forest Management Plan.
- All future projects need to be developed with local people and in partnership with other local groups and LCC. FoCF are keen to do this!
- Some projects will be easy to kick start with local skills and agreement.
- Potential for Heritage Lottery Funding and other funding once future projects have been agreed on locally and with LCC.
- More volunteers to help with FoCF work and maintenance tasks are ALWAYS welcome! Please do contact us at chevinforest@gmail.com

Next steps for LBU

1. Continue to develop pathway mapping.
2. Undertake analysis of forester's diaries.
3. Discuss how we can help LCC with mapping
4. Continue to support FoCF as much as possible on future projects.

Thankyou for listening Any questions & comments?

Emma Oldroyd CMLI | Senior Lecturer in Landscape
Architecture | E.L.Oldroyd@leedsbeckett.ac.uk

Artwork by Laure Desproges

